

Dual Matter-Wave Inertial Sensors in Weightlessness

Brynle Barrett,^{1,*} Laura Antoni-Micollier,¹ Laure Chichet,¹ Baptiste Battelier,¹ Thomas Lévêque,² Arnaud Landragin,³ and Philippe Bouyer¹

¹*LP2N, IOGS, CNRS and Université de Bordeaux, rue François Mitterrand, 33400 Talence, France*

²*CNES, 18 avenue Edouard Belin, 31400 Toulouse, France*

³*LNE-SYRTE, Observatoire de Paris, PSL Research University, CNRS, Sorbonne Universités, UPMC Univ. Paris 06,*

61 avenue de l'Observatoire, 75014 Paris, France

(Dated: September 14, 2016)

Quantum technology based on cold-atom interferometers is showing great promise for fields such as inertial sensing and fundamental physics. However, the best precision achievable on Earth is limited by the free-fall time of the atoms, and their full potential can only be realized in Space where interrogation times of many seconds will lead to unprecedented sensitivity. Various mission scenarios are presently being pursued which plan to implement matter-wave inertial sensors. Toward this goal, we realize the first onboard operation of simultaneous $^{87}\text{Rb} - ^{39}\text{K}$ interferometers in the weightless environment produced during parabolic flight. The large vibration levels ($10^{-2} g/\sqrt{\text{Hz}}$), acceleration range ($0 - 1.8 g$) and rotation rates (5 deg/s) during flight present significant challenges. We demonstrate the capability of our dual-quantum sensor by measuring the Eötvös parameter with systematic-limited uncertainties of 1.1×10^{-3} and 3.0×10^{-4} during standard- and micro-gravity, respectively. This constitutes the first test of the equivalence principle in a free-falling vehicle with quantum sensors. Our results are applicable to inertial navigation, and can be extended to the trajectory of a satellite for future Space missions.

The field of quantum physics and atom optics is promising major leaps forward in technology for many applications, including communication, computation, memory and storage, positioning and guidance, geodesy, and tests of fundamental physics. Among these developments, the coherent manipulation of atoms with light, which exploits the particle-wave duality of matter, has led to the development of matter-wave interferometers exhibiting ground-breaking precision [1–4]—particularly for measuring inertial effects such as rotations [5–7] and accelerations [3, 4, 8, 9]. However, the exquisite sensitivity of these quantum inertial sensors often limits their applicability to very quiet and well-controlled laboratory settings—despite recent efforts that have led to major technological simplifications and the emergence of portable devices [3, 10, 11]. The precision of these instruments becomes particularly relevant when it comes to fundamental tests of General Relativity (GR). For instance, the Universality of Free Fall (UFF), a cornerstone of GR which states that a body will undergo an acceleration in a gravitational field that is independent of its internal structure or composition, can be probed at the quantum scale [12, 13]. Tests of the UFF generally involve measuring the relative acceleration between two different test masses in free fall with the same gravitational field, and are characterized by the Eötvös parameter

$$\eta = 2 \frac{a_1 - a_2}{a_1 + a_2}, \quad (1)$$

where a_1 and a_2 are the gravitational accelerations of the two masses. Presently, the best atom-interferometric measurement of η has been carried out with the two isotopes of rubidium at the level of a few 10^{-8} [14]—

five orders of magnitude less precise than the best tests with classical bodies [15, 16]. This has motivated increasing the sensitivity of matter-wave interferometers (which scales as the square of the free-fall time) by circumventing the limits set by the gravitational free fall on Earth, either by building a large-scale vertical apparatus [1, 17, 18] or by letting the entire setup fall in an evacuated tower [19]. This is also one of the main goals for Space-borne experiments [20, 21], where the satellite can be viewed as an ideal “Einstein elevator”.

Our experiment, where two matter-wave sensors composed of rubidium-87 and potassium-39 operate simultaneously in the weightless environment produced by parabolic flight (Fig. 1), is the first realization of an atom-interferometric test of the UFF in microgravity. We demonstrate measurements of η with precisions of 10^{-3} during steady flight and a few 10^{-4} in weightlessness using a new interferometer geometry optimized for microgravity operation. Since the aircraft’s trajectory during parabolic flight closely mimics that of a satellite in an elliptical orbit, but with residual accelerations of $\sim 1\%$ terrestrial gravity, a precise analysis of its trajectory was necessary to compute the systematic effects on the interferometer phase. This enabled us to quantify the present performance of our atomic sensors onboard the aircraft, and has direct consequences for future implementations of the strap-down inertial navigation algorithm with matter-wave interferometers [10, 22, 23]. This analysis has also allowed us to put strict requirements on the satellite trajectory in future Space missions that target precisions of $\delta\eta \simeq 10^{-15}$ [20, 21].

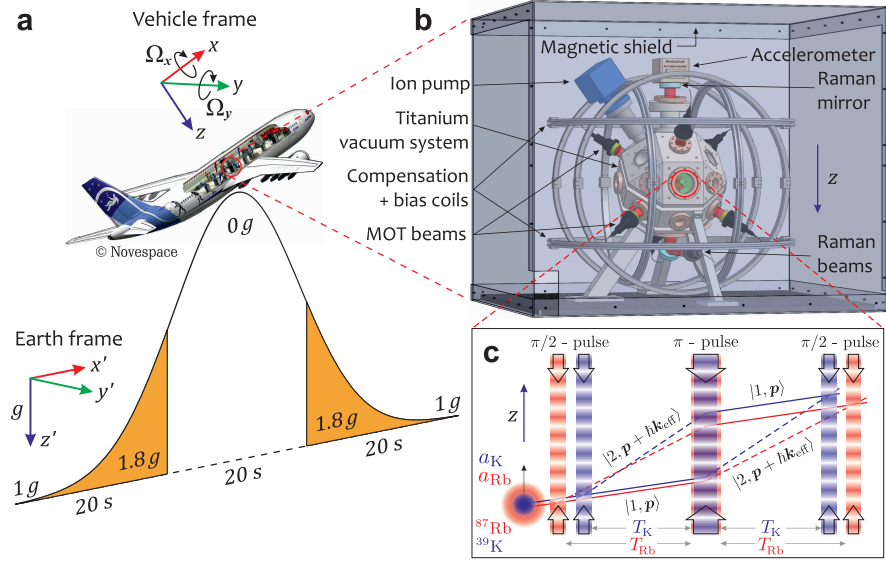


FIG. 1. **Dual matter-wave sensors onboard the Novespace Zero-G aircraft.** (a) Basic trajectory during parabolic flight which produces 20 s of weightlessness per maneuver. The coordinate systems xyz and $x'y'z'$ correspond to the rotating frame of the vehicle and the frame of the Earth, respectively. (b) The science chamber mounted onboard the aircraft. Samples of ^{87}Rb and ^{39}K are laser cooled and spatially overlapped in a vapor-loaded magneto-optical trap contained within a titanium vacuum system, which is enclosed by a mu-metal magnetic shield. Raman beams are aligned along the z -axis of the aircraft. (c) Schematic of the simultaneous dual-species interferometers. Two Mach-Zehnder-type $\pi/2 - \pi - \pi/2$ pulse sequences are centered about the π -pulse with interrogation times T_{Rb} and T_{K} , respectively. These free-fall times are adjusted independently to equilibrate the scale factors of each interferometer.

Results

Operation during steady flight. When the aircraft is in steady flight, each of the matter-wave inertial sensors acts as an atom-based gravimeter [3, 8, 9, 24], where counter-propagating light pulses drive Doppler-sensitive single-diffraction Raman transitions between two hyperfine ground states $|1, \mathbf{p}\rangle$ and $|2, \mathbf{p} + \hbar\mathbf{k}^{\text{eff}}\rangle$, where \mathbf{p} is the momentum of the atoms resonant with the Raman transition. This creates a superposition of two internal states separated by the two-photon momentum $\hbar\mathbf{k}^{\text{eff}}$, where \hbar is the reduced Planck's constant, and $\mathbf{k}^{\text{eff}} \simeq (4\pi/\lambda)\mathbf{e}_z$ is the effective wavevector of the Raman light ($\lambda = 780$ nm for rubidium and 767 nm for potassium). Because the Raman beams are retro-reflected, this transfer can occur along either the upward ($-\mathbf{k}^{\text{eff}}$) or downward ($+\mathbf{k}^{\text{eff}}$) directions, with an efficiency determined by the vertical velocity \mathbf{v} of the atoms. If the velocity is large enough (*e.g.* the Doppler shift $\mathbf{k}^{\text{eff}} \cdot \mathbf{v}$ is larger than the spectral width $k^{\text{eff}}\sigma_v$ associated with sample's velocity spread σ_v), a specific momentum transfer direction can be selected by an appropriate choice of the Raman laser frequency difference. Changing the sign of the transfer direction allows the rejection of direction-independent systematics by summing two consecutive, alternated measurements [13, 24]. For each transfer direction, the output of the interferometer is given by

$$P^\pm = P^0 - \frac{C}{2} \cos(\Phi^\pm), \quad (2)$$

where P^0 is the mean probability of finding the atom in one interferometer output port, C is the fringe contrast and Φ^\pm is the total interferometer phase corresponding to a particular momentum transfer direction ($\pm\hbar\mathbf{k}^{\text{eff}}$). This phase has contributions from the gravitational acceleration $\phi^{\text{acc}} = \mathbf{k}^{\text{eff}} \cdot \mathbf{a}T^2$ (where \mathbf{a} is the relative acceleration between the reference mirror and the atoms, and T is the free-fall time between light pulses), vibrations of the reference mirror ϕ^{vib} , the total laser phase imprinted on the atoms by the Raman beams ϕ^{las} , systematic effects ϕ^{sys} , and a phase corresponding to a potential violation of the equivalence principle $\phi_{\text{K,Rb}}^{\text{UFF}} = \mathbf{k}_{\text{K,Rb}}^{\text{eff}} \cdot (\mathbf{a}_{\text{K,Rb}} - \mathbf{a})T^2$ for either atomic species.

Operation during parabolic flight. To operate in weightlessness, we introduced a new interferometer geometry consisting of two simultaneous single-diffraction Raman transitions in opposite directions, which we refer to as double single-diffraction (DSD). In microgravity, the residual Doppler shift is small and the two opposite Raman transitions are degenerate. Thus, we choose a fixed Raman detuning δ within the spectral width defined by the atomic velocity distribution that simultaneously selects two velocity classes of opposite sign: $\pm\mathbf{v}$. This results in two symmetric interferometers of opposite area (Fig. 2) which sum to yield the output signal for a particular internal state

$$P^{\text{DSD}} = P^+ + P^- = 2P^0 - C \cos(\Sigma\Phi) \cos(\Delta\Phi), \quad (3)$$

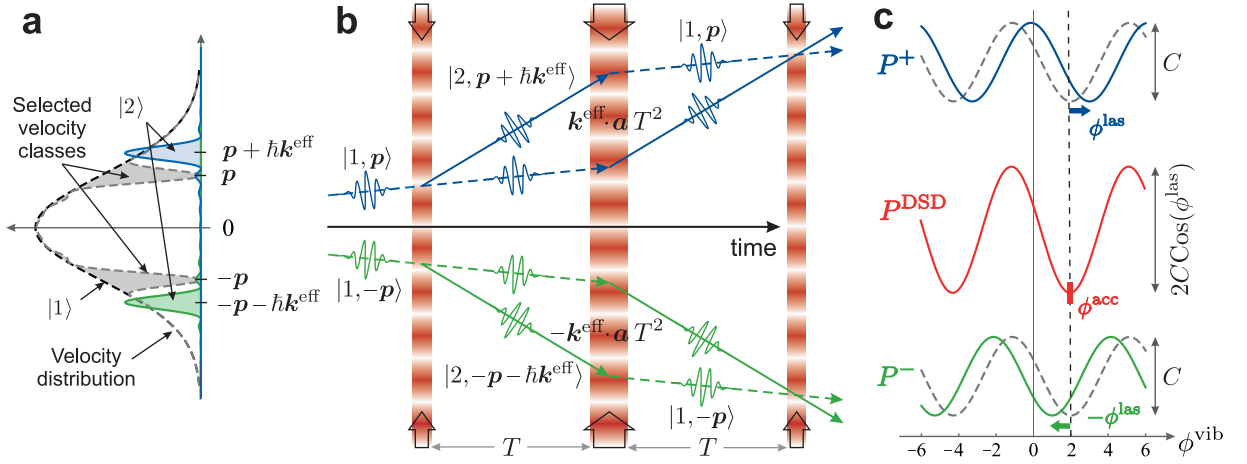


FIG. 2. **Principles of the double single-diffraction interferometer.** (a) Velocity distribution of the atoms in microgravity. The Raman frequency is tuned near the half-maximum—simultaneously selecting two symmetric velocity classes $\pm v = \pm p/M$. (b) Double single-diffraction interferometer trajectories. Double Raman diffraction [25] is avoided by ensuring that the Rabi frequency satisfies $\Omega^{\text{eff}} \ll 2k^{\text{eff}}v$, $k^{\text{eff}}\sigma_v$. (c) Interference fringes as a function of the vibration phase ϕ^{vib} for upward and downward interferometers (P^\pm) and the sum of the two (P^{DSD}). Direction-independent phases like ϕ^{las} modulate the contrast but not the phase of the DSD fringes (ϕ^{sys} and $\phi_{\text{K,Rb}}^{\text{UFF}}$ are omitted for simplicity).

where $2P^0$, $C \leq 1/2$ since the sample is initially split into two velocity classes by the first $\pi/2$ -pulse. The DSD interferometer signal given by Eq. (3) is a product of two cosines—one containing the half-sum $\Sigma\Phi = \frac{1}{2}(\Phi^+ + \Phi^-)$, which exhibits only non-inertial contributions (ϕ^{las} , and direction-independent systematics), and one with the half-difference $\Delta\Phi = \frac{1}{2}(\Phi^+ - \Phi^-)$, which contains all inertial contributions (ϕ^{acc} , ϕ^{vib} , $\phi_{\text{K,Rb}}^{\text{UFF}}$, and direction-dependent systematics). Since non-inertial and inertial contributions are now separated, we fix ϕ^{las} such that the contrast ($2C \cos(\Sigma\Phi)$) is maximized, and the fringes are scanned by the inertially-sensitive phase $\Delta\Phi$. The DSD interferometer has the advantage of simultaneously rejecting direction-independent systematics during each shot of the experiment, since they affect only the fringe contrast. Hence, the systematic phase shift per shot is greatly reduced compared to the single-diffraction configuration.

Correlated atomic sensor measurements. Onboard the aircraft the dominant source of interferometer phase noise is caused by vibrations of the reference mirror, which serves as the inertial phase reference for both ^{87}Rb and ^{39}K sensors. Hence, the atomic signal caused by its motion is indistinguishable from motion of the atoms. To make this distinction, we measured the mirror motion with a mechanical accelerometer from which we compute the vibration-induced phase ϕ^{vib} and correlate it with the normalized output population for each species. We refer to this process as the fringe reconstruction by accelerometer correlation (FRAC) method [10, 24, 26]. Furthermore, since the two pairs of Raman beams follow the same optical pathway and operate simultaneously, the vibration noise is common mode and can be highly sup-

pressed from the differential phase between interference fringes.

Figure 3 displays interferometer fringes for both ^{87}Rb and ^{39}K , recorded during steady flight (1g) and in weightlessness (0g) during parabolic maneuvers, for interrogation times $T = 1$ and 2 ms. Fringes recorded in 1g were obtained with the single-diffraction interferometer along the $+k^{\text{eff}}$ direction, while those in 0g were realized using the DSD configuration along both $\pm k^{\text{eff}}$ simultaneously. Least-squares fits to these fringes yield the FRAC phases $\phi_{\text{Rb,K}}^{\text{FRAC}}$, which are related to the gravitational acceleration of each species. From these fits we measure a maximum signal-to-noise ratio of $\text{SNR} \simeq 8.9$, and infer an acceleration sensitivity of $(k^{\text{eff}}T^2 \text{SNR})^{-1} \simeq 1.8 \times 10^{-4} g$ per shot. The best performance onboard the aircraft was achieved with the Rb interferometer at $T = 5$ ms ($\text{SNR} \simeq 7.6$), which yielded $3.4 \times 10^{-5} g$ per shot—more than 1600 times below the level of vibration noise during steady flight ($\sim 0.055 g$).

Correlation between the potassium and rubidium interferometers is clearly visible when the same data are presented in parametric form (Figs. 3c and 3f). We obtain general Lissajous figures when the acceleration sensitivity of the two species are not equal [26], as shown in Fig. 3c. These shapes collapse into an ellipse (with an ellipticity determined by the differential phase) only when the interferometer scale factor ratio $\kappa \simeq 1$ (Fig. 3f). This configuration is advantageous because both interferometers respond identically to low-frequency mirror vibrations (*i.e.* frequencies $\lesssim 1/2T$), and the Lissajous shape remains fixed regardless of the common-mode phase span. We achieve this condition by ensuring the interrogation times satisfy $(T_{\text{K}}/T_{\text{Rb}})^2 \simeq k_{\text{Rb}}^{\text{eff}}/k_{\text{K}}^{\text{eff}}$.

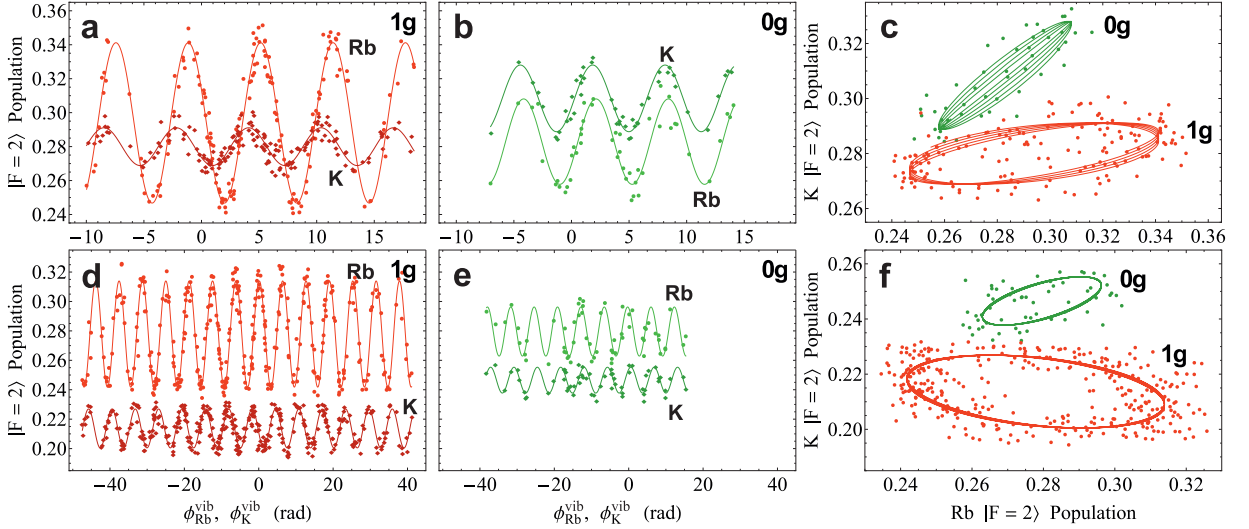


FIG. 3. **Simultaneous K-Rb interferometer fringes during standard- and micro-gravity.** The normalized population in the ground state $|F=2\rangle$ for each species is correlated with the vibration-induced phase ϕ^{vib} for an interrogation time $T \simeq 1$ ms (a–c) and $T \simeq 2$ ms (d–f). Fringes labeled 0g were recorded over three consecutive parabolas for plot (b), and five parabolas for plot (e), consisting of approximately 12 points per parabola. Fringes labeled 1g were recorded during periods of steady flight between parabolas, and consist of approximately 70 points per maneuver. In plots (a,b,d,e), solid lines indicate least-squares fits to sinusoidal functions, which yield a typical SNR of 7 for ^{87}Rb and 5 for ^{39}K data. Plots (c) and (f) show correlations between population measurements for each interferometer. The solid lines are parametric representations of the corresponding fit functions shown in (a,b,d,e). The interferometer scale factor ratio was computed using $\kappa = S_{\text{K}}/S_{\text{Rb}}$, where $S_j = k_j^{\text{eff}}(T_j + \tau_j^\pi)(T_j + 2\tau_j^\pi/\pi)$ is the exact scale factor for species j [26]. This yielded $\kappa \simeq 0.985$ for (a–c) and $\kappa \simeq 1.001$ for (d–f). Other parameters: (a–c) $T_{\text{Rb}} = 1.01$ ms, $T_{\text{K}} = 1$ ms; (d–f) $T_{\text{Rb}} = 2.01$ ms, $T_{\text{K}} = 2$ ms; (a–f) π -pulse durations $\tau_{\text{Rb}}^\pi = 17$ μs , $\tau_{\text{K}}^\pi = 9$ μs .

Tests of the UFF. Using the sensitivity to gravitational acceleration along the z -axis of the aircraft, we made a direct test of the UFF in both standard gravity and in weightlessness. The relative acceleration between potassium and rubidium atoms is measured by correcting the relative FRAC phase shift for systematic effects (see Methods), and isolating the differential phase due to a possible UFF violation

$$\phi_{\text{d}}^{\text{UFF}} = \phi_{\text{K}}^{\text{UFF}} - \kappa \phi_{\text{Rb}}^{\text{UFF}} = k_{\text{K}}^{\text{eff}} T_{\text{K}}^2 (a_{\text{K}} - a_{\text{Rb}}), \quad (4)$$

where $\kappa \simeq k_{\text{K}}^{\text{eff}} T_{\text{K}}^2 / k_{\text{Rb}}^{\text{eff}} T_{\text{Rb}}^2$ is the ratio of interferometer scale factors when T is much larger than the Raman pulse durations [26]. The Eötvös parameter was then obtained from $\eta = \phi_{\text{d}}^{\text{UFF}} / k_{\text{K}}^{\text{eff}} a^{\text{eff}} T_{\text{K}}^2$, where a^{eff} is the average projection of the gravitational acceleration vector \mathbf{a} along the z -axis over the duration of the measurements. This quantity depends strongly on the trajectory of the aircraft. For our experiments, we estimate $a_{1g}^{\text{eff}} \simeq 9.779(20)$ m/s² and $a_{0g}^{\text{eff}} \simeq 8.56(98)$ m/s² during 1g and 0g, respectively, where the uncertainty is the 1σ variation of the projection resulting from the aircraft’s orientation [27]. The fact that a_{0g}^{eff} is less than g originates from the large variation in the aircraft’s slope angle over a parabola (± 45 deg). From the data shown in Figs. 3d–f, we measure an Eötvös parameter of $\eta_{1g} = (-0.5 \pm 1.1) \times 10^{-3}$ during steady flight. Here, the uncertainty is the combined statistical ($\delta\eta_{1g}^{\text{stat}} = 4.9 \times 10^{-5}$)

and systematic ($\delta\eta_{1g}^{\text{sys}} = 1.1 \times 10^{-3}$) error—which was limited primarily by direction-independent phase shifts due to the quadratic Zeeman effect. Similarly, in microgravity we measure $\eta_{0g} = (0.9 \pm 3.0) \times 10^{-4}$, with corresponding statistical ($\delta\eta_{0g}^{\text{stat}} = 1.9 \times 10^{-4}$) and systematic ($\delta\eta_{0g}^{\text{sys}} = 2.3 \times 10^{-4}$) errors. Here, the increased statistical error is a result of fewer data available in 0g. However, the systematic uncertainty improves by a factor of ~ 5 compared to measurements in standard gravity. This is a direct result of the reduced sensitivity of the DSD interferometer to direction-independent systematic effects. Both measurements are consistent with $\eta = 0$.

Discussion

Although the systematic uncertainty was dominated by technical issues related to time-varying magnetic fields, the sensitivity of our measurements was primarily limited by two effects related to the motion of the aircraft—vibrational noise on the retro-reflection mirror, and rotations of the interferometer beams. These effects inhibited access to large interrogation times due to a loss of interference contrast, and are particularly important for future satellite missions targeting high sensitivities with free-fall times of many seconds.

In addition to phase noise on the interferometer, large levels of mirror vibrations cause a loss of interference contrast due to a Doppler shift of the two-photon resonance.

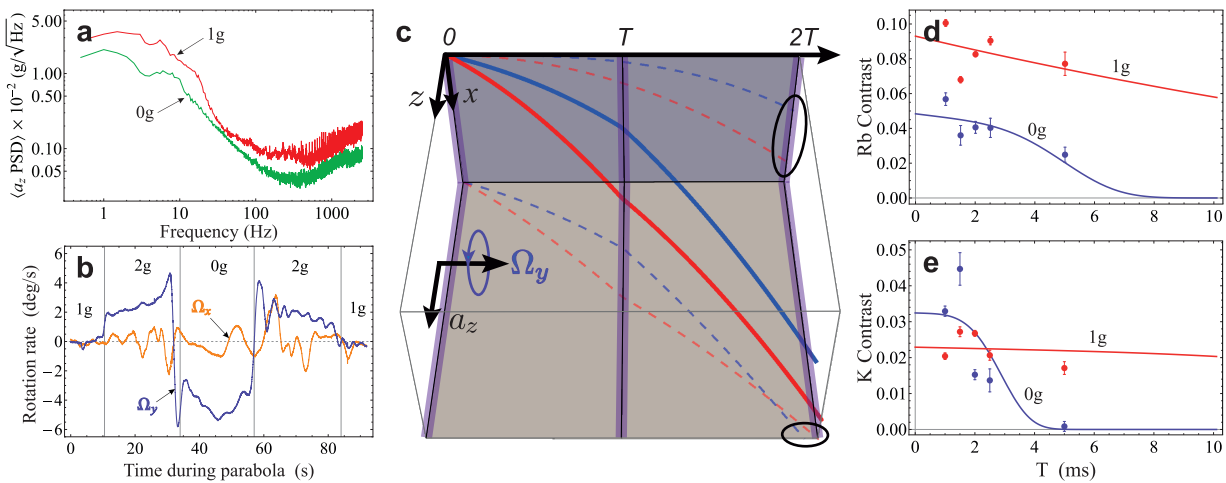


FIG. 4. **Interference contrast loss onboard the aircraft.** (a) The mean power spectral density of vibrations along the z -axis of the aircraft during 1g and 0g. At low frequencies ($\lesssim 10$ Hz), the amplitude of vibrations is approximately 5 orders of magnitude higher than those found in a quiet laboratory setting [24]. The standard deviation of the vibration noise spectrum is $\sigma_a^{\text{vib}} \simeq 0.055g$ during 1g and $0.038g$ during 0g. (b) The rotation rates about the x -axis (orange line) and y -axis (blue line) of the aircraft during a parabola, where $|\Omega_y| \sim 5$ deg/s during parabolic maneuvers. (c) Interferometer trajectories in the presence of a constant acceleration a_z along the z -axis and a rotation Ω_y about the y -axis. Purple lines indicate the time of the Raman pulses. The two circled regions in the xt - and zt -planes show the separation between the two pathways that lead to a phase shift and a loss of contrast. (d,e) Measured fringe contrast as a function of T for the Rb and K interferometers during both 1g (red points) and 0g (blue points). The error bars indicate the statistical uncertainty from least-squares fits to the corresponding fringes. The solid lines are models for the contrast loss for each species (see Supplementary Material).

To avoid significant losses, the Doppler shift must be well-bounded by the spectral width of the Raman transition Ω^{eff} during each light pulse. A model of this effect (see Supplementary Material) confirms that it is most significant when the standard deviation of mirror vibrations is $\sigma_a^{\text{vib}} \gtrsim \Omega^{\text{eff}}/k^{\text{eff}}T$. Figure 4a shows the mean power spectral density of vibrations onboard the aircraft during 1g and 0g. We use these data to estimate upper limits on T corresponding to a relative contrast loss of $\sim 60\%$. For our experimental parameters, we find $T^{\text{max}} \simeq 20$ ms and 30 ms for 1g and 0g, respectively. Conversely, for future Space missions planning interrogation times of order $T = 5$ s and $\Omega^{\text{eff}} \simeq 2\pi \times 5$ kHz [20], our model predicts an upper limit on the vibration noise of $\sigma_a^{\text{vib}} < 40 \mu g$. One strategy to mitigate this effect is to suppress high-frequency vibrations using an active isolation system modified to operate in microgravity [28]. However, for inertial navigation applications, measuring the vibrations is critical to accurate positioning, thus a hybrid classical-quantum solution may be more viable [29]. Onboard the aircraft, a combination of these two solutions will give access to free-fall times up to ~ 1 s, above which the jerk of the aircraft will be too large to keep the atoms in the interrogation region defined by the Raman beams.

During parabolic maneuvers, the aircraft's trajectory is analogous to a Nadir-pointing satellite in an elliptical orbit. The rotation of the experiment during a parabola causes a loss of contrast due to the separation of wavepacket trajectories (Fig. 4c) and the resulting imperfect

overlap during the final $\pi/2$ -pulse [1, 30–32]. For a rotation vector Ω_T transverse to k^{eff} and a velocity spread σ_v , the wavepacket displacement can be shown to produce a relative contrast loss of $C \simeq e^{-(k^{\text{eff}}\sigma_v T)^2 (|\Omega_T|T)^2}$ (see Supplementary Material). Hence, during a parabola where $|\Omega_T| \simeq 5$ deg/s, the loss of contrast reaches 60% by $T = 5$ ms for our ^{87}Rb sample and by $T = 2.8$ ms for ^{39}K . Figures 4d and 4e show the measured contrast loss as a function of T for each species during both steady and parabolic flight. We fit a model to these data which includes effects due to both vibrations and rotations. Using only a vertical scale factor as a free parameter, we find good agreement with the data. This loss of contrast can be compensated by counter-rotating the retro-reflection mirror during the interferometer sequence [1, 30]. Additionally, imaging the atoms on a camera can mitigate this effect, since the rotation-induced spatial fringes in the atomic density profile can be measured directly [1, 33].

Using the model we validated with our experiment, we estimate the rotation limitations of a highly elliptical orbit such as in STE-QUEST [20]. In the case of a Nadir-pointing satellite with an orbital rotation rate near perigee (700 km) of ~ 2.7 deg/s, we estimate a 60% loss of contrast by $T \simeq 73$ ms for the experimental parameters proposed in Ref. [20]. This justifies the choice of inertial-pointing, where the rotation of the satellite counteracts that of the orbit, in order to reach the target sensitivity of 3×10^{-12} m/s² per shot at $T = 5$ s. We estimate a loss of $< 1\%$ at $T = 5$ s can be achieved if the residual

rotation rate is $< 6 \times 10^{-5}$ deg/s.

We have realized the first dual matter-wave inertial sensors capable of operating onboard a moving vehicle—enabling us to observe correlated quantum interference between two chemical species in a weightless environment, and to demonstrate a UFF test in microgravity at a precision two orders of magnitude below the level of vibrations onboard the aircraft. With the upcoming launch of experiments in the International Space Station [34, 35], and in a sounding rocket [36], this work provides another important test bed for future cold-atom experiments in weightlessness. In the Zero-G aircraft, even if the limit set by its motion cannot be overcome, an improvement of more than four orders of magnitude is expected by cooling the samples to ultra-cold temperatures, and actively compensating the vibrations and rotations of the reference mirror. This will approach the desired conditions for next-generation atom interferometry experiments, such as those designed for advanced tests of gravitation [37], gradiometry [38], or the detection of gravitational waves [39].

Methods

Experimental setup. Experiments were carried out onboard the Novespace A310 Zero-G aircraft where the interferometers operated during more than 100 parabolic maneuvers, each consisting of approximately 20 s of weightlessness ($0g$) and 2-5 min of standard gravity ($1g$). Two laser-cooled atomic samples (^{87}Rb at $4 \mu\text{K}$, and ^{39}K at $18 \mu\text{K}$) were simultaneously interrogated by a $\pi/2 - \pi - \pi/2$ sequence of coherent velocity-sensitive Raman pulses, separated by free-fall times T_{Rb} and T_{K} , respectively (Fig. 1a), which set the acceleration response of each interferometer. The laser light used for this manipulation is aligned through the atoms and retro-reflected along the yaw-axis (z -axis) of the aircraft (Fig. 1b). A detailed description of our experimental apparatus, fiber-based laser system and fluorescence detection scheme can be found in Ref. [26]. When the aircraft is in steady flight, the Raman beams are vertical—maximizing the sensitivity to gravitational acceleration. Due to the high vibration levels onboard the aircraft, the interferometer fringes are reconstructed using a correlative method [10, 24, 26] with measurements from a three-axis mechanical accelerometer (Colibrys SF3600) fixed to the rear of the retro-reflecting mirror. These acceleration measurements were also combined with software to discriminate between the $0g$, $1g$ and $2g$ phases of a parabola (Fig. 1a), and to automatically switch the interferometers between two different operating modes (single diffraction and double single-diffraction) during each maneuver. A frequency chirp is applied to the Raman frequency during $1g$ in order to cancel the gravity-induced Doppler shift. The chirp is disabled by software during parabolic maneuvers. Interferometer measurements taken during the $2g$ phase were rejected during the data analysis process. Finally, the rotation rates $\Omega_x(t)$ and $\Omega_y(t)$ are continuously monitored during the flight using a two-axis fiber-optic gyroscope (KVH DSP-1750). Combined with continuous acceleration measurements, we integrate the equations of motion in the rotating frame to obtain the trajectory of the two atomic clouds with respect to the reference mirror for each shot of the experiment. These trajectories are used to estimate systematic shifts on the measurement of η due to the Coriolis effect and the magnetic gradient.

Evaluation of systematic effects. To evaluate the systematic effects on the measurement of η , we begin by separating the total interferometer phase ϕ_j^\pm (corresponding to atom j and momentum transfer direction $\pm \mathbf{k}_j^{\text{eff}}$) into five contributions

$$\phi_j^\pm = \pm \phi_j^{\text{acc}} \pm \phi_j^{\text{UFF}} \pm \phi_j^{\text{vib}} + \phi_j^{\text{las}} + \phi_j^{\text{sys},\pm}, \quad (5)$$

where $\phi_j^{\text{acc}} = \mathbf{S}_j \cdot \mathbf{a}$ is the phase due to the relative gravitational acceleration \mathbf{a} between the reference mirror and the atoms with scale factor $\mathbf{S}_j = \mathbf{k}_j^{\text{eff}}(T_j + \tau_j^\pi)(T_j + 2\tau_j^\pi/\pi)$ and π -pulse duration τ_j^π , $\phi_j^{\text{UFF}} = \mathbf{S}_j \cdot (\mathbf{a}_j - \mathbf{a})$ is a phase shift from a possible UFF violation, $\phi_j^{\text{vib}} = \mathbf{k}_j^{\text{eff}} \cdot \int f_j(t) \mathbf{a}^{\text{vib}}(t) dt$ is a random phase caused by mirror vibrations with corresponding time-dependent acceleration $\mathbf{a}^{\text{vib}}(t)$ and interferometer response function $f_j(t)$ [26, 40], $\phi_j^{\text{las}} = \varphi_j(0) - 2\varphi_j(T_j) + \varphi_j(2T_j)$ is the contribution from the Raman laser phase at each interferometer pulse, and ϕ_j^{sys} represents the total systematic phase shift. We express the total systematic phase as the following sum

$$\phi_j^{\text{sys},\pm} = \sum_i \phi_{i,j}^{\text{sys},\pm} = \sum_i \Sigma \phi_{i,j}^{\text{ind}} \pm \Delta \phi_{i,j}^{\text{dep}}, \quad (6)$$

where i is an index corresponding to a given systematic effect. In general, these phases can depend on both the magnitude and the sign of $\mathbf{k}_j^{\text{eff}}$. To simplify the analysis, we divide $\phi_{i,j}^{\text{sys},\pm}$ into two separate phases labeled $\Sigma \phi_{i,j}^{\text{ind}}$ for the direction-independent phase shifts, and $\Delta \phi_{i,j}^{\text{dep}}$ to denote the direction-dependent shifts (*i.e.* those proportional to the sign of $\mathbf{k}_j^{\text{eff}}$). We isolate these components by evaluating the sum and the difference between systematics corresponding to each momentum transfer direction

$$\Sigma \phi_{i,j}^{\text{ind}} = \frac{1}{2} (\phi_{i,j}^{\text{sys},+} + \phi_{i,j}^{\text{sys},-}), \quad (7a)$$

$$\Delta \phi_{i,j}^{\text{dep}} = \frac{1}{2} (\phi_{i,j}^{\text{sys},+} - \phi_{i,j}^{\text{sys},-}). \quad (7b)$$

For the specific case of the single-diffraction interferometer used in $1g$ along $+\mathbf{k}_j^{\text{eff}}$, the systematic phase shift is given by $\phi_j^{\text{sys},1g} = \phi_j^{\text{sys},+}$. In comparison, for the DSD interferometer, only direction-dependent systematic effects can shift the phase of the fringes measured as a function of ϕ_j^{vib} . In the ideal case, the sum of $\Delta \phi_{i,j}^{\text{dep}}$ is the sole contribution to the systematic shift of the DSD fringes, since $\Sigma \phi_{i,j}^{\text{ind}}$ is direction-independent and thus contributes only to the fringe contrast (see Fig. 2). However, in the more general case, these two phases can indirectly affect the phase of the DSD interferometer when the two pairs of Raman beams do not excite the selected velocity classes $\pm v_j^{\text{sel}}$ with the same probability. We denote this contribution ϕ_j^{DSD} , thus the total systematic phase for the interferometers used in $0g$ is

$$\phi_j^{\text{sys},0g} = \phi_j^{\text{DSD}} + \sum_i \Delta \phi_{i,j}^{\text{dep}}. \quad (8)$$

Table 1 displays a list of the systematic phase shifts affecting the interferometers operating at $T \simeq 2$ ms onboard the aircraft (Figs. 3d–f).

Phase corrections and η measurements. The raw interferometer phase for each species is measured directly from fits to the fringes reconstructed using the FRAC method (Fig. 3). We refer to this quantity as the FRAC phase ϕ_j^{FRAC} . For the interferometers used in standard gravity, the measured fringes follow Eq. (2) with total phase Φ_j^+ . Since the vibration phase ϕ_j^{vib} is the quantity used to scan Φ_j^+ , the FRAC phase is related to the sum of all other phase contributions through

$$\phi_j^{\text{acc}} + \phi_j^{\text{las}} + \phi_j^{\text{sys},+} + \phi_j^{\text{UFF}} = \phi_j^{\text{FRAC}} + 2\pi n_j^{2\pi}, \quad (9)$$

where $n_j^{2\pi}$ is an integer representing a certain fringe. Assuming that $|\phi_j^{\text{UFF}}| < \pi$, and provided the total uncertainty from all other phases is much less than π , the UFF phase can be isolated from Eq. (9) by computing the fringe number from $n_j^{2\pi} = [(\phi_j^{\text{acc}} + \phi_j^{\text{las}} + \phi_j^{\text{sys},+})/2\pi]$, where the square brackets indicate rounding to the nearest integer. A similar procedure can be carried out for the DSD fringes obtained in weightlessness, where the total phase Φ_j^+ is replaced with the half-difference $\Delta \Phi_j = \frac{1}{2}(\Phi_j^+ - \Phi_j^-)$. We point out that the laser phase does not contribute to the DSD interferometer because it is independent of the momentum transfer

Systematic effect	$+k^{\text{eff}}$ in $1g$		$\pm k^{\text{eff}}$ in $0g$				Unit
	$\phi_{\text{Rb}}^{\text{sys}}$	$\phi_{\text{K}}^{\text{sys}}$	$\Delta\phi_{\text{Rb}}^{\text{dep}}$	$\Sigma\phi_{\text{Rb}}^{\text{ind}}$	$\Delta\phi_{\text{K}}^{\text{dep}}$	$\Sigma\phi_{\text{K}}^{\text{ind}}$	
Quadratic Zeeman	2127(48)	30596(694)	0	2127(34)	0	30587(491)	mrاد
Magnetic gradient	31.9(8.3)	958(215)	20.7(4.1)	0.0096(19)	745(116)	1.46(21)	mrاد
Coriolis effect	-0.551(18)	-0.80(26)	10.9(1.5)	0	14.6(2.1)	0	mrاد
One-photon light shift	-2.1(3.6)	-51(81)	0	-2.1(2.5)	0	-51(57)	mrاد
Two-photon light shift	1.3(2.8)	16(68)	1.3(2.0)	0	16(48)	0	mrاد
Extra laser lines	-0.18(10)	0	0.030(26)	0.19(16)	0	0	mrاد
FRAC method	0.0(3.3)	0.0(3.3)	0.0(3.3)	0	0.0(3.3)	0	mrاد
Gravity gradient	22(20)E-6	61(20)E-6	54(52)E-9	15(14)E-6	-20(8)E-9	39(14)E-6	mrاد
DSD asymmetry	0	0	-39(3)	0	-29(30)	0	mrاد
Total	2157(49)	31519(735)	-6.8(6.6)	2125(34)	795(129)	30537(494)	mrاد

TABLE 1. **Table of systematic phase shifts** for the single-diffraction interferometer ($+k^{\text{eff}}$) operated during steady flight ($1g$), and the DSD interferometer ($\pm k^{\text{eff}}$) operated during parabolic flight ($0g$). The 1σ statistical uncertainties are indicated in parentheses. The corresponding interference fringes are shown in Figs. 3d and 3e.

direction. Furthermore, since we are interested in only the differential UFF phase given by Eq. (4), the contribution due to the gravitational acceleration cancels ($\phi_{\text{K}}^{\text{acc}} - \kappa\phi_{\text{Rb}}^{\text{acc}} = 0$).

The Eötvös parameter is obtained from

$$\eta = \frac{a_{\text{K}} - a_{\text{Rb}}}{a^{\text{eff}}} = \frac{\phi_{\text{d}}^{\text{UFF}}}{S_{\text{K}} a^{\text{eff}}}, \quad (10)$$

where a^{eff} is the effective gravitational acceleration to which the atom interferometer is sensitive over the duration of a measurement. To estimate a^{eff} , we first compute the gravitational acceleration along the vertical z' -axis, $a(\varphi, \lambda, h)\epsilon_{z'}$, over a 2D grid of latitude (φ) and longitude (λ) coordinates at a fixed altitude h using the Earth gravitational model EGM2008 [41]. From these values, we calculate the average projection of the gravitational acceleration vector on the axis of the Raman beams (ϵ_k). In the Earth frame, the interferometer axis is defined as $\epsilon_k = -\sin\theta_y\epsilon_{x'} + \sin\theta_x\cos\theta_y\epsilon_{y'} + \cos\theta_x\cos\theta_y\epsilon_{z'}$ after rotations about the x' - and y' -axes by roll angle θ_x and slope angle θ_y , respectively. It follows that the effective gravitational acceleration is given by

$$a^{\text{eff}} = \langle a(\varphi, \lambda, h) \rangle \langle \cos\theta_x \cos\theta_y \rangle, \quad (11)$$

where $\langle \dots \rangle$ denotes an average. Table 2 contains the list of corrections applied to the raw data to obtain η . We now describe some of the dominant systematic effects that were specific to our experiment onboard the aircraft.

Coriolis phase shift. During steady flight, if the aircraft is tilted by angles θ_x and θ_y about the x' - and y' -axes respectively (see Fig. 1a), a component of the gravitational acceleration lies along the axes perpendicular to $k^{\text{eff}} = k^{\text{eff}}\epsilon_z$, thus a rotation about these axes will cause a phase shift, ϕ^Ω , due to the Coriolis effect. To first order in the rotation rate Ω , this shift can be split into two main parts

$$\phi^\Omega = -2[k^{\text{eff}} \times (v_0 + a_0 T)] \cdot \Omega T^2 = \phi_{v_0}^\Omega + \phi_{a_0}^\Omega, \quad (12)$$

where first term is due to an atomic velocity v_0 at the start of the interferometer, and the second originates from a constant acceleration $a_0 = g\epsilon_{z'} + \delta a$. For small angles θ_x and θ_y , it is straightforward to show that

$$\phi_{v_0}^\Omega = -2k^{\text{eff}}(v_{0x}\Omega_y - v_{0y}\Omega_x)T^2, \quad (13a)$$

$$\phi_{\delta a}^\Omega = -2k^{\text{eff}}[(\delta a_x + g\theta_y)\Omega_y - (\delta a_y - g\theta_x)\Omega_x]T^3, \quad (13b)$$

where δa is a small shot-to-shot variation due to the motion of the aircraft of order $|\delta a| \simeq 0.05g$ (see Fig. 4a), and the initial velocity is related to δa via $v_0 = v_j^{\text{sel}}\epsilon_z + \delta a\Delta t$. Here, v_j^{sel} is the selected atomic velocity determined by the frequency difference between Raman beams, and Δt represents the free-fall time between cloud release and the first $\pi/2$ -pulse ($\Delta t \simeq 3$ ms in our case).

j	$+k^{\text{eff}}$ in $1g$		$\pm k^{\text{eff}}$ in $0g$		Unit
	Rb	K	Rb	K	
ϕ_j^{acc}	646.442	647.146	-0.356	-0.356	rad
ϕ_j^{las}	-646.905	-647.132	0	0	rad
ϕ_j^{sys}	2.157(49)	31.519(735)	-0.0068(66)	0.795(129)	rad
Sum	1.694(49)	31.532(735)	-0.363(66)	0.439(129)	rad
ϕ_j^{FRAC}	3.294(18)	1.363(26)	2.855(72)	3.703(81)	rad
$n_j^{2\pi}$	0	5	-1	-1	
ϕ_j^{UFF}	1.597(52)	1.246(735)	-3.065(73)	-3.020(152)	rad
		K- κ Rb		K- κ Rb	
ϕ_d^{UFF}		-0.352(737)		0.049(169)	rad
η		$-0.5(1.1) \times 10^{-3}$		$0.9(3.0) \times 10^{-4}$	

TABLE 2. **Table of phase corrections**, along with the final measurement of η for the fringes shown in Figs. 3d and 3e. In both cases, $T_{\text{K}} = 2$ ms and $T_{\text{Rb}} = 2.01$ ms, with scale factors $S_{\text{Rb}} = 65.97$ rad/m/s² and $S_{\text{K}} = 66.04$ rad/m/s²—yielding a ratio of $\kappa = 1.0011$. Values of a^{eff} for both $1g$ and $0g$ are given in Table 3.

Table 3 displays the mean value and range of variation of some inertial parameters during each flight configuration. These data imply that the dominant contribution to the Coriolis phase during steady flight is the instability in the roll angle. The corresponding phase shift at $T = 2$ ms is estimated to be $\phi_{1g}^\Omega \simeq 0.1(3)$ mrad for both ^{87}Rb and ^{39}K . In comparison, during a parabolic trajectory the atoms are in free-fall and the acceleration relative to the mirror is close to zero, hence the Coriolis phase shift is much less sensitive to the orientation of the aircraft relative to g . However, during this phase the aircraft can reach rotation rates of $|\Omega| > 5$ deg/s (see Fig. 4b), which occurs primarily about the y -axis (Fig. 1a). This causes small atomic velocities perpendicular to the direction of k^{eff} to produce significant phase shifts. We estimate $\phi_{0g}^\Omega \simeq -3.7(3)$ mrad at $T = 2$ ms for a mean rotation rate of $\Omega_y \simeq 4.1$ deg/s.

These simple estimates, although useful to give an intuitive understanding, do not include effects due to finite Raman pulse lengths τ , time-varying rotation rates $\Omega(t)$, or time-varying accelerations $a(t)$. Since these effects are significant in our case, it was necessary to develop a new expression to accurately estimate the associated phase shift. The result of these calculations, which were based on the sensitivity function formalism [42], is the following

	Steady Flight		Parabolic Flight		Unit
	Mean	Range	Mean	Range	
h	6.332	0.025	8.642	0.228	km
s	163	8	82	13	m/s
a_x	-0.196	0.314	0.078	0.069	m/s ²
a_y	0.078	0.039	0.039	0.039	m/s ²
a_z	9.816	0.382	0.098	0.226	m/s ²
θ_x	-1.2	2.5	-1.9	2.4	deg
θ_y	0.01	0.35	-6.0	50.8	deg
Ω_x	-0.07	0.24	-0.19	0.90	deg/s
Ω_y	0.00	0.15	4.1	1.1	deg/s
Ω_z	-0.04	0.12	0.00	0.16	deg/s
$\langle a \rangle$	9.789	0.002	9.782	0.002	m/s ²
$\langle \cos \theta \rangle$	0.999	0.002	0.875	0.100	
a^{eff}	9.779	0.020	8.56	0.98	m/s ²

TABLE 3. **Inertial parameters measured during each flight configuration.** h : altitude; s : air speed; a_x, a_y, a_z : accelerations along x, y, z axes of the vehicle; θ_x : roll angle; θ_y : slope angle; $\Omega_x, \Omega_y, \Omega_z$: rotation rates about the x, y, z axes. Values in the “Mean” columns indicate the average of data recorded over five consecutive parabolas (~ 800 s of flight time), and the “Range” column gives the interquartile range of the same data—indicating the typical variation for each parameter. The aircraft’s altitude, air speed, roll and slope angles are courtesy of Novespace. The last three rows give the mean gravitational acceleration $\langle a \rangle$, the mean projection factor $\langle \cos \theta \rangle$, and the effective gravitational acceleration a^{eff} (Eq. (11)) used to measure the Eötvös parameter shown in Table 2. In these rows, the value in the Range column corresponds to the 1σ uncertainty. Estimates of $\langle a \rangle$ were obtained from the Earth gravity model EGM2008 over the flight region defined by opposite-corner coordinates $6^\circ 44' \text{W}$, $45^\circ 23' \text{N}$ and $2^\circ 43' \text{W}$, $48^\circ 37' \text{N}$ at altitude h . The projection factor is based on the variation in the aircraft’s roll and slope angles during the measurements.

expression

$$\Phi^\Omega = - \int w^\Omega(t) (\mathbf{k}^{\text{eff}} \times \mathbf{v}(t)) \cdot \boldsymbol{\Omega}(t) dt - \iint_t^\infty w^\Omega(t') (\mathbf{k}^{\text{eff}} \times \mathbf{a}(t')) \cdot \boldsymbol{\Omega}(t) dt' dt, \quad (14)$$

which describes the Coriolis phase shift due to an atomic trajectory undergoing a time-dependent rotation $\boldsymbol{\Omega}(t)$ and acceleration $\mathbf{a}(t)$. Here, $w^\Omega(t)$ is a weight function

$$w^\Omega(t) = t g^s(t) + \int_t^\infty g^s(t') dt', \quad (15)$$

which contains the interferometer sensitivity function $g^s(t)$. In the limit of short pulse lengths, and constant accelerations and rotations, Eq. (14) reduces to Eq. (12).

During the flight, we measure the acceleration of the Raman mirror in the rotating frame (Fig. 1) using a three-axis mechanical accelerometer, and the rotation rates $\Omega_x(t)$ and $\Omega_y(t)$ are measured using a two-axis [43] fiber-optic gyroscope. We then integrate the equations of motion in the rotating frame to obtain $\mathbf{v}(t)$ relative to the Raman mirror, and we use Eq. (14) to obtain the Coriolis phase shift for each shot of the experiment. The values reported in the third row of Table 1 represent the average of this phase taken over the course of all measurements during a given flight configuration. For the DSD interferometer used in 0g, we computed the

Coriolis shift for both upward and downward atomic trajectories and combined the results as in Eq. (7b).

Double single-diffraction phase shift. The DSD interferometer that we employ in microgravity is sensitive to an additional systematic shift that is not present in the single-diffraction interferometer. This phase shift arises from the fact that we cannot distinguish between the atoms that are diffracted upwards and downwards. For instance, if there is an asymmetry in the number of atoms diffracted along these two directions, and the direction-independent phase $\Sigma\Phi^{\text{ind}}$ is non-zero, this will produce two phase-shifted fringe patterns with different contrasts. Since we measure the sum of these two fringe patterns, there is an additional phase shift that depends on the relative contrast $\varepsilon = C^-/C^+ - 1$ between the $\pm k^{\text{eff}}$ interferometers and $\Sigma\Phi^{\text{ind}}$ as follows

$$\phi^{\text{DSD}} = \tan^{-1} \left[-\frac{\varepsilon/2}{1 + \varepsilon/2} \tan \Sigma\Phi^{\text{ind}} \right]. \quad (16)$$

For the $T \simeq 2$ ms fringes shown in Fig. 3e, we estimate $\varepsilon \simeq 0.05$ for both rubidium and potassium interferometers. Hence, using the total direction-independent systematics listed in columns 5 and 7 of Table 1, we obtain DSD phase shifts of $\phi_{\text{Rb}}^{\text{DSD}} \simeq -39(3)$ mrad and $\phi_{\text{K}}^{\text{DSD}} \simeq -29(30)$ mrad.

Quadratic Zeeman effect and magnetic gradient. The primary source of systematic phase shift in this work originated from a time-varying B -field during the interferometer produced by a large aluminum breadboard near the coils used to produce a magnetic bias field for the interferometers. Due to the relatively large pulsed fields (~ 1.5 G) required to sufficiently split the magnetically sensitive transitions in ^{39}K , Eddy currents produced in the aluminum breadboard during the interferometer significantly shift the resonance frequency of the clock transition $|1, m_F = 0\rangle \rightarrow |2, m_F = 0\rangle$ via the quadratic Zeeman effect. We recorded the field just outside the vacuum system with a flux gate magnetometer (Bartington MAG-03MCTPB500) and used these data, in conjunction with spectroscopic calibrations of the field at the location of the atoms, to compute the associated systematic phase shift for each shot of the experiment.

The second-order (quadratic) Zeeman effect shifts the frequency of the clock transition as $\Delta\omega_j^B = 2\pi K_j |B|^2$, where $K_{\text{Rb}} = 575.15$ Hz/G² for ^{87}Rb and $K_{\text{K}} = 8513.75$ Hz/G² for ^{39}K [44]. This effect can shift the phase of the interferometers in three ways: (i) due to a B -field that is non-constant in time ($\phi_j^{B(t)}$), (ii) from a field that is non-constant in space ($\phi_j^{B(z)}$), or (iii) via the force on the atoms from a spatial magnetic gradient ($\phi_j^{B_1}$). The total systematic shift due to magnetic field effects is the sum of these three phases

$$\phi_j^{\text{sys}, B} = \phi_j^{B(t)} + \phi_j^{B(z)} + \phi_j^{B_1}. \quad (17)$$

We model the local magnetic field experienced by the atoms as follows

$$B(z, t) = \beta_0 \xi(t) + \beta_1 z \quad (18)$$

where β_0 is a magnetic bias field, $\beta_1 = \partial B / \partial z$ is a magnetic gradient, and $\xi(t)$ is a unitless envelope function that can describe the field turn-on, as well as residual Eddy currents.

The phase shift due to a temporal variation of the B -field ($\phi_j^{B(t)}$) can be computed using [42]

$$\phi_j^{B(t)} = \int g_j^s(t) \Delta\omega_j^B(t) dt = 2\pi K_j \int g_j^s(t) |B(z_j^0, t)|^2 dt, \quad (19)$$

where $g_j^s(t)$ is the interferometer sensitivity function [26, 40] and $\Delta\omega_j^B(t) = 2\pi K_j |B(z_j^0, t)|^2$ is the clock shift at the initial position of the atoms. Similarly, the phase $\phi_j^{B(z)}$ due to the clock shift from a spatially non-uniform field can be expressed as

$$\phi_j^{B(z)} = 2\pi K_j \int g_j^s(t) (|B(\bar{z}_j(t), t)|^2 - |B(z_j^0, t)|^2) dt. \quad (20)$$

Here, $\bar{z}_j(t) = z_j^0 + (v_j^{\text{sel}} \pm v_j^{\text{rec}}/2)t + at^2/2$ is the center-of-mass trajectory [45] of atom j along the interferometer pathways, z_j^0 and

v_j^{sel} are the initial atomic position and selected velocity respectively, $v_j^{\text{rec}} = \hbar k_j^{\text{eff}}/M_j$ is the corresponding recoil velocity, and a is a constant acceleration along the direction of z . In Eq. (20), we have used the difference between the field experienced by a falling atom and that of a stationary atom at $z = z_j^0$ in order to separate the spatial effect of the field from the temporal one.

To measure $|B(z, t)|$, we used velocity-insensitive Raman spectroscopy of magnetically-sensitive two-photon transitions ($|1, m_F = \pm 1\rangle \rightarrow |2, m_F = \pm 1\rangle$) and we extracted the resonance frequency as a function of the time in free fall in standard gravity—yielding a map of $|B(z, t)|$. However, this method cannot distinguish between the temporally- and spatially-varying components of the field. To isolate the spatial gradient β_1 , we performed the same spectroscopy experiment with the bias field on continuously to eliminate the turn-on envelope and to minimize Eddy currents. The difference between these measurements yielded the temporally-varying component of the field. For typical experimental parameters during the flight ($T_j \sim 2$ ms, $\beta_0 \sim 1.5$ G), we find $\phi_{\text{Rb}}^{B(t)} \sim 2.1$ rad and $\phi_{\text{K}}^{B(t)} \sim 30.5$ rad, as listed in the first row of Table 1. These relatively large phase shifts are produced by the large bias required to separate the $|1, m_F = \pm 1\rangle$ states from $|1, m_F = 0\rangle$, and a significant variation in the envelope during the interferometer (the field changes by ~ 0.5 G in 2 ms) produced by the Eddy currents. Similarly, we estimate $\phi_{\text{Rb}}^{B(z)} \sim 0.032$ rad and $\phi_{\text{K}}^{B(z)} \sim 0.96$ rad during 1g which arises from a measured gradient of $\beta_1 \simeq 13$ G/m, as listed in the second row of Table 1.

The phase shift $\phi_j^{\beta_1}$ arising from the force on the atoms due to the magnetic gradient can be computed by evaluating the state-dependent atomic trajectories and following the formalism of Ref. [46]. Up to order T_j^4 and $\Lambda_j^2 = \hbar K_j/M_j$, this phase can be shown to be

$$\phi_j^{\beta_1} = \mp \frac{2}{3} k_j^{\text{eff}} (\Lambda_j \beta_1)^2 \left[\left(v_j^{\text{sel}} \pm \frac{v_j^{\text{rec}}}{2} \right) T_j + a T_j^2 \right] T_j^2, \quad (21)$$

where the \mp sign convention corresponds to $\pm k_j^{\text{eff}}$. We emphasize that this phase scales $(\Lambda_{\text{K}}/\Lambda_{\text{Rb}})^2 \sim 33$ times more strongly for potassium than rubidium due to its lighter mass and smaller hyperfine splitting ($K_j \propto 1/\omega_j^{\text{HF}}$). However, since the magnetic gradient force is opposite in sign for $|F = 1\rangle$ and $|F = 2\rangle$, and the states are exchanged halfway through the interferometer, this phase shift is generally much smaller than those produced by shifts of the clock transition. For typical experimental parameters during steady flight ($T_j \simeq 2$ ms, $v_j^{\text{sel}} \simeq 5$ cm/s, $a \simeq 9.8$ m/s², $\beta_1 \simeq 12$ G/m), the phase shift is $\phi_{\text{K}}^{\beta_1} \simeq -0.12$ mrad for ³⁹K and $\phi_{\text{Rb}}^{\beta_1} \simeq -3.4$ μ rad for ⁸⁷Rb. We sum this phase with $\phi_j^{B(z)}$ in the second row of Table 1.

Acknowledgements

This work is supported by the French national agencies CNES, ANR, DGA, IFRAF, action spécifique GRAM, RTRA “Triangle de la Physique”, and the European Space Agency. B. Barrett and L. Antoni-Micollier thank CNES and IOGS for financial support. P. Bouyer thanks Conseil Régional d’Aquitaine for the Excellence Chair. Finally, the ICE team would like to thank A. Bertoldi of IOGS for his assistance during the Zero-G flight campaign in May 2015; V. Ménotet of MuQuans for helpful discussions; D. Holleville, B. Venon, F. Cornu of SYRTE and J.-P. Aoustin of the laboratory GEPI for their technical assistance building vacuum and optical components; and the staff of Novespace.

Author contributions

P.B. and A.L. conceived the experiment and directed research progress; B. Battelier contributed to construction of the first generation apparatus, helped to direct research progress and provided technical support; B. Barrett led upgrades to the second generation apparatus, performed experiments, carried out the data analysis and wrote the article; L.A.-M. and L.C. helped upgrade the potassium interferometer and carried out experiments; T.L. provided

technical support during flight campaigns. All authors provided comments and feedback during the writing of this manuscript.

Additional information

The authors declare no competing financial interests. Supplementary information accompanies this manuscript.

* brynle.barrett@institutoptique.fr

- [1] Susannah M. Dickerson, Jason M. Hogan, Alex Sugraker, David M. S. Johnson, and M. A. Kasevich, “Multiaxis Inertial Sensing with Long-Time Point Source Atom Interferometry,” *Phys. Rev. Lett.* **111**, 083001 (2013).
- [2] G. Rosi, F. Sorrentino, L. Cacciapuoti, M. Prevedelli, and G. M. Tino, “Precision measurement of the Newtonian gravitational constant using cold atoms,” *Nature* **510**, 518 (2014).
- [3] P. Gillot, O. Francis, A. Landragin, F. Pereira Dos Santos, and S. Merlet, “Stability comparison of two absolute gravimeters: optical versus atomic interferometers,” *Metrologia* **51**, L15 (2014).
- [4] Kyle S. Hardman, Patrick J. Everitt, Gordon D. McDonald, Perumbil Manju, Paul B. Wigley, Mahasen A. Sooriyabandara, Carlos C. N. Kuhn, John E. Debs, John D. Close, and N. P. Robins, “A quantum sensor: simultaneous precision gravimetry and magnetic gradiometry with a Bose-Einstein condensate,” (2016), arXiv:1603.01967 [atom-ph].
- [5] T. L. Gustavson, P. Bouyer, and M. A. Kasevich, “Precision Rotation Measurements with an Atom Interferometer Gyroscope,” *Phys. Rev. Lett.* **78**, 2046–2049 (1997).
- [6] B. Barrett, R. Geiger, Indranil Dutta, Matthieu Meunier, Benjamin Canuel, Alexandre Gauguier, P. Bouyer, and A. Landragin, “The Sagnac effect: 20 years of development in matter-wave interferometry,” *C. R. Physique* **15**, 875–883 (2014).
- [7] I. Dutta, D. Savoie, B. Fang, B. Venon, C. L. Garrido Alzar, R. Geiger, and A. Landragin, “Continuous cold-atom inertial sensor with 1 nrad/s rotation stability,” (2016), arXiv:1604.00940 [atom-ph].
- [8] Achim Peters, Keng Yeow Chung, and Steven Chu, “Measurement of gravitational acceleration by dropping atoms,” *Nature* **400**, 849 (1999).
- [9] Zhong-Kun Hu, Bu-Liang Sun, Xiao-Chun Duan, Min-Kang Zhou, Le-Le Chen, Su Zhan, Qiao-Zhen Zhang, and Jun Luo, “Demonstration of an ultrahigh-sensitivity atom-interferometry absolute gravimeter,” *Phys. Rev. A* **88**, 043610 (2013).
- [10] R. Geiger, V. Ménotet, G. Stern, N. Zahzam, P. Cheinet, B. Battelier, A. Villing, F. Moron, M. Lours, Y. Bidet, A. Bresson, A. Landragin, and P. Bouyer, “Detecting inertial effects with airborne matter-wave interferometry,” *Nat. Commun.* **2**, 474 (2011).
- [11] C. Freier, M. Hauth, V. Schkolnik, B. Leykof, M. Schilling, H. Wziontek, H.-G. Scherneck, J. Müller, and A. Peters, “Mobile quantum gravity sensor with unprecedented stability,” (2015), arXiv:1512.05660 [atom-ph].
- [12] M. A. Hohensee, H. Müller, and R. B. Wiringa, “Equivalence Principle and Bound Kinetic Energy,” *Phys. Rev. Lett.* **111**, 151102 (2013).

- [13] D. Schlippert, J. Hartwig, H. Albers, L. L. Richardson, C. Schubert, A. Roura, W. P. Schleich, W. Ertmer, and E. M. Rasel, “Quantum Test of the Universality of Free Fall,” *Phys. Rev. Lett.* **112**, 203002 (2014).
- [14] Lin Zhou, Shitong Long, Biao Tang, Xi Chen, Fen Gao, Wencui Peng, Weitao Duan, Jiaqi Zhong, Zongyuan Xiong, Jin Wang, Yuanzhong Zhang, and Mingsheng Zhan, “Test of Equivalence Principle at 10^{-8} Level by a Dual-Species Double-Diffraction Raman Atom Interferometer,” *Phys. Rev. Lett.* **115**, 013004 (2015).
- [15] James G. Williams, Slava G. Turyshev, and Dale H. Boggs, “Progress in Lunar Laser Ranging Tests of Relativistic Gravity,” *Phys. Rev. Lett.* **93**, 261101 (2004).
- [16] S. Schlamminger, K.-Y. Choi, T. A. Wagner, J. H. Gundlach, and E. G. Adelberger, “Test of the Equivalence Principle Using a Rotating Torsion Balance,” *Phys. Rev. Lett.* **100**, 041101 (2008).
- [17] T. Kovachy, P. Asenbaum, C. Overstreet, C. A. Donnelly, S. M. Dickerson, A. Sugarbaker, J. M. Hogan, and M. A. Kasevich, “Quantum superposition at the half-metre scale,” *Nature* **528**, 530–533 (2015).
- [18] J. Hartwig, S. Abend, C. Schubert, D. Schlippert, H. Ahlers, K. Posso-Trujillo, N. Gaaloul, W. Ertmer, and E. M. Rasel, “Testing the universality of free fall with rubidium and ytterbium in a very large baseline atom interferometer,” *New J. Phys.* **17**, 035011 (2015).
- [19] H. Müntinga, H. Ahlers, M. Krutzik, a. Wenzlawski, S. Arnold, D. Becker, K. Bongs, H. Dittus, H. Duncker, N. Gaaloul, C. Gherasim, E. Giese, C. Grzeschik, T. W. Hänsch, O. Hellmig, W. Herr, S. Herrmann, E. Kajari, S. Kleinert, C. Lämmerzahl, W. Lewoczko-Adamczyk, J. Malcolm, N. Meyer, R. Nolte, a. Peters, M. Popp, J. Reichel, a. Roura, J. Rudolph, M. Schiemangk, M. Schneider, S. T. Seidel, K. Sengstock, V. Tamma, T. Valenzuela, a. Vogel, R. Walser, T. Wendrich, P. Windpassinger, W. Zeller, T. van Zoest, W. Ertmer, W. P. Schleich, and E. M. Rasel, “Interferometry with Bose-Einstein Condensates in Microgravity,” *Phys. Rev. Lett.* **110**, 093602 (2013).
- [20] D. Aguilera, H. Ahlers, B. Battelier, A. Bawamia, A. Bertoldi, R. Bondarescu, K. Bongs, P. Bouyer, C. Braxmaier, L. Cacciapuoti, C. Chaloner, M. Chwalla, W. Ertmer, M. Franz, N. Gaaloul, M. Gehler, D. Gerardi, L. Gesa, N. Gürlebeck, J. Hartwig, M. Hauth, O. Hellmig, W. Herr, S. Herrmann, A. Heske, A. Hinton, P. Ireland, P. Jetzer, U. Johann, M. Krutzik, A. Kubelka, C. Lämmerzahl, A. Landragin, I. Lloro, D. Massonnet, I. Mateos, A. Milke, M. Nofrarias, M. Oswald, A. Peters, K. Posso-Trujillo, E. Rasel, E. Rocco, A. Roura, J. Rudolph, W. Schleich, C. Schubert, T. Schuldt, S. Seidel, K. Sengstock, C. F. Sopuerta, F. Sorrentino, D. Summers, G. M. Tino, C. Trenkel, N. Uzunoglu, W. von Klitzing, R. Walser, T. Wendrich, A. Wenzlawski, P. Weßels, A. Wicht, E. Wille, M. Williams, P. Windpassinger, and N. Zahzam, “STE-QUEST test of the universality of free fall using cold atom interferometry,” *Class. Quantum Gravity* **31**, 115010 (2014).
- [21] J. Williams, S.-w. Chiow, N. Yu, and H. Müller, “Quantum Test of the Equivalence Principle and Space-Time aboard the International Space Station,” *New J. Phys.* **18**, 025018 (2016).
- [22] C. Jekeli, “Navigation Error Analysis of Atom Interferometer Inertial Sensor,” *J. Inst. Nav.* **52**, 1 (2005).
- [23] O. J. Woodman, [An Introduction to Inertial Navigation](#), Tech. Rep. 696 (University of Cambridge, Cambridge, UK, 2007).
- [24] J. Le Gouët, T. E. Mehlstäubler, J. Kim, S. Merlet, A. Clairon, A. Landragin, and F. Pereira Dos Santos, “Limits to the sensitivity of a low noise compact atomic gravimeter,” *Appl. Phys. B* **92**, 133 (2008).
- [25] T. Lévêque, A. Gauguier, F. Michaud, F. Pereira Dos Santos, and A. Landragin, “Enhancing the Area of a Raman Atom Interferometer Using a Versatile Double-Diffraction Technique,” *Phys. Rev. Lett.* **103**, 080405 (2009).
- [26] B. Barrett, L. Antoni-Micollier, L. Chichet, B. Battelier, P.-A. Gominet, A. Bertoldi, P. Bouyer, and A. Landragin, “Correlative methods for dual-species quantum tests of the weak equivalence principle,” *New. J. Phys.* **17**, 085010 (2015).
- [27] We used the Earth gravitational model EGM2008 to estimate changes in local gravity over the range of latitude, longitude and elevation during the flight and found these effects to be negligible compared to those caused by the variation in the aircraft’s roll and slope angles.
- [28] A. Preumont, M. Horodincu, I. Romanescu, B. de Marnette, M. Avraam, A. Deraemaeker, F. Bossens, and A. Abu Hanieh, “A six-axis single-stage active vibration isolator based on Stewart platform,” *J. Sound Vibration* **300**, 644 (2007).
- [29] J. Lautier, L. Volodimer, T. Hardin, S. Merlet, M. Lours, F. Pereira Dos Santos, and A. Landragin, “Hybridizing matter-wave and classical accelerometers,” *Appl. Phys. Lett.* **105**, 144102 (2014).
- [30] Shau-Yu Lan, Pei-Chen Kuan, Brian Estey, Philipp Haslinger, and H. Müller, “Influence of the Coriolis Force in Atom Interferometry,” *Phys. Rev. Lett.* **108**, 090402 (2012).
- [31] A. Roura, W. Zeller, and W. P. Schleich, “Overcoming loss of contrast in atom interferometry due to gravity gradients,” *New J. Phys.* **16**, 123012 (2014).
- [32] Akash V. Rakholia, Hayden J. McGuinness, and Grant W. Biedermann, “Dual-axis, high data-rate atom interferometer via cold ensemble exchange,” *Phys. Rev. Applied* **2**, 8 (2014).
- [33] Gregory W. Hoth, Bruno Pelle, Stefan Riedl, John Kitching, and Elizabeth A. Donley, “Point source atom interferometry with a cloud of finite size,” *Appl. Phys. Lett.* **109**, 071113 (2016).
- [34] M. Soriano, D. Aveline, M. McKee, K. Virkler, C. Yamamoto, and A. Sengupta, “Cold atom laboratory mission system design,” in [Aerospace Conference, IEEE](#) (2014) pp. 1–11.
- [35] T. Lévêque, B. Faure, F. X. Esnault, C. Delaroche, D. Massonnet, O. Grosjean, F. Buffe, P. Torresi, T. Bomer, A. Pichon, P. Béraud, J. P. Lelay, S. Thomin, and Ph Laurent, “PHARAO laser source flight model: Design and performances,” *Rev. Sci. Instrum.* **86**, 033104 (2015).
- [36] S. T. Seidel, N. Gaaloul, and E. M. Rasel, “MAIUS - A Rocket-Born Test of an Atom Interferometer with a Chip-Based Atom Laser,” in *Proc. of 63rd International Astronautical Congress 2012*, Vol. 3 (2013) p. 801.
- [37] P. Hamilton, M. Jaffe, P. Haslinger, Q. Simmons, H. Müller, and J. Khoury, “Atom-interferometry constraints on dark energy,” *Science* **349**, 849 (2015).
- [38] Olivier Carraz, Christian Siemes, Luca Massotti, Roger Haagmans, and Pierluigi Silvestrin, “A Spaceborne

- Gravity Gradiometer Concept Based on Cold Atom Interferometers for Measuring Earth's Gravity Field," *Microgravity Sci. Tech.* **26**, 139 (2014).
- [39] J. M. Hogan, David M. S. Johnson, Susannah Dickerson, Tim Kovachy, Alex Sugarbaker, Sheng-wei Chiow, Peter W. Graham, M. A. Kasevich, Babak Saif, Surjeet Rajendran, P. Bouyer, Bernard D. Seery, Lee Feinberg, and Ritva Keski-Kuha, "An atomic gravitational wave interferometric sensor in low earth orbit (AGIS-LEO)," *Gen. Relativ. Gravit.* **43**, 1953 (2011).
- [40] P. Cheinet, B. Canuel, F. Pereira Dos Santos, a. Gauguet, F. Yver-Leduc, and a. Landragin, "Measurement of the Sensitivity Function in a Time-Domain Atomic Interferometer," *IEEE Trans. Instrum. Meas.* **57**, 1141–1148 (2008).
- [41] N. K. Pavlis, S. A. Holmes, S. C. Kenyon, and J. K. Factor, "Development and evaluation of the earth gravitational model 2008 (EGM2008)," *J. Geophys. Res. Solid Earth* **118**, 2633 (2013).
- [42] Benjamin Canuel, *Étude d'un gyromètre à atomes froids*, Ph.D. thesis, Université Paris XI (2007).
- [43] The rotation rate Ω_z does not contribute significantly to the Coriolis phase because it is parallel to \mathbf{k}^{eff} .
- [44] D. A. Steck, "Rubidium 87 D Line Data," (23 December 2010), revision 2.1.4.
- [45] We have ignored the influence of the magnetic gradient force on the atomic trajectory since it is small compared that of gravity.
- [46] K. Bongs, R. Launay, and M. A. Kasevich, "High-order inertial phase shifts for time-domain atom interferometers," *Appl. Phys. B* **84**, 599–602 (2006).